

HSS-SENSE IRX5000

Acoustic Infrared Two in One Imager



HSS-SENSE IRX5000

Acoustic Infrared Image Camera 2 in 1

The HSS-SENSE IRX5000 Acoustic Infrared Two in One Imager is an advanced industrial device that integrates acoustic and infrared imaging technologies. This device is suitable for quantitative non-contact heat detection and imaging, with the ability to measure quickly, accurately, and repeatedly. It also supports defect detection and imaging based on sound waves. It is widely used in quality control, maintenance, and damage diagnosis in industries such as manufacturing, aerospace, wind power, and automobiles. In addition, the device has a highly intelligent feature and can perform various measurements and analyses through software control and data processing, making it very suitable for the needs of industrial automation and digital production.

HSS-SENSE IRX5000 Main Features

8 MP HD Camera

128 MEMS Microphones

0.3 to 130 m Operation Range

2 to 65kHz Bandwidth Adjustable

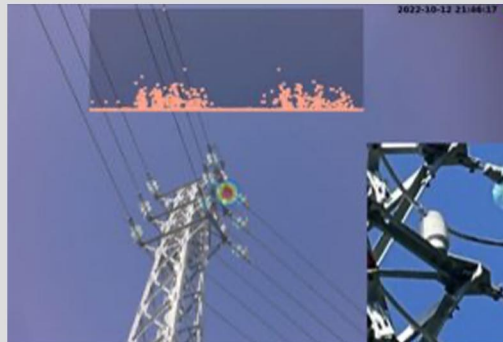


- Functions (Power Grid, Mechanical Vibration, Gas Leakage)
- 128 MEMS microphones
- Locating defects (electrical, vibration, leakage, infrared)
- One-handed operation for flexibility
- 8-megapixel HD camera clearly shows defects
- Real-time display of the discharge level on screen
- Automatic determination of the type and severity of PD according to tested equipment
- Testing frequencies from 2kHz-65kHz
- Testing range from 0.3 m-130 m
- Photos and videos for recording abnormal spots

Real time visualization of partial discharge

Real time visualization of partial discharge

Real time detection of partial discharge signals generated by equipment and conversion of the signals into visual images, intuitively reflecting the health status of the equipment.



Partial discharge type judgment

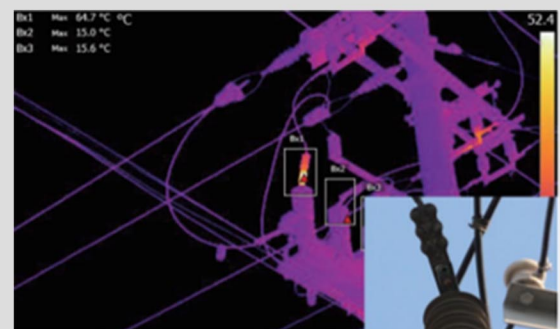
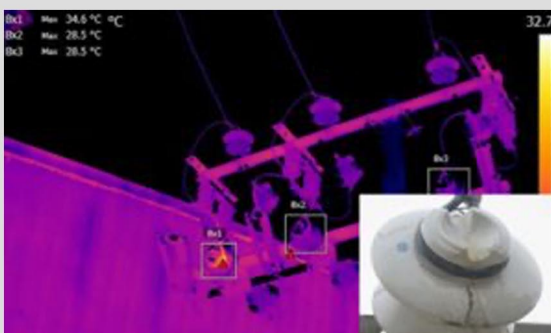
By collecting partial discharge signals and analyzing them through various algorithms, the type of partial discharge can be determined

Traceability of testing site

Record the detection results one-to-one with photos, videos, and other information from the actual detection site. Users can quickly and accurately locate the fault source through the sound and image information saved on the device, and can replay the saved records at any time, facilitating subsequent analysis and processing by users.

Assist in generating detection reports

The auxiliary detection report generation function of the S860 acoustic imaging instrument can help users quickly and accurately generate a complete detection report, improving their work efficiency and the credibility of detection results



Dill-Tech



Distributor of Subsurface Detection System and Utility Instruments

www.dill-tech.com.au
Email: sales@dill-tech.com.au
Phone: (+61) 0407 425 315